

2008-09 DIRECTORY

WISCONSIN

Bed & Breakfast
ASSOCIATION




WISCONSIN
B&B
ASSOCIATION

We've been selective
Now it's your turn
yestobliss.com

Relax... be yourself, savor culinary specialties... enjoy a good night's sleep!

That's the essence of a B&B getaway.

Famous Wisconsin hospitality – equal parts graciousness and genuine fun – are served up in ample doses at 200 WBBA properties. In every corner of the state, member inns (and innkeepers for that matter) each have unique personalities, giving B&B travel its special appeal.

INN-Credible Gift Certificates

Good at every one of the 200 WBBA inns

Personalized and with *no expiration date*, WBBA **INN-Credible Gift Certificates** live up to their name!

Congeniality has always been a WBBA hallmark, so



WBBA inns have passed a rigorous Standards Inspection in order to earn association membership. And WBBA innkeepers will share insider knowledge of their area, pointing you to the best art galleries, hiking trails, fishing spots and shopping finds.

Inside these pages are photos and a short description of each inn. Find greater detail at www.yestobliss.com.

We've been selective... now it's your turn!

Let us know how you enjoyed your stay. We welcome comments at www.yestobliss.com.

Most cordially,

Kris Ullmer, Administrator

Wisconsin Bed & Breakfast Association
108 South Cleveland St., Merrill, WI 54452-2435
715-539-9222 fax: 715-536-2507
info@yestobliss.com www.yestobliss.com

we especially enjoy presenting travelers with our easy-to-give and easy-to-use gift certificate.

Ordering is easy too. Log on to www.yestobliss.com. Click on the **Gift Certificate** link at the bottom of the WBBA home page or call CertifiChecks at 877-770-4438.

Your thoughtful gift may be used to return to a favorite B&B, visit a new inn, or experience B&B bliss for the first time. Consider an **INN-Credible Gift Certificate** the next time you're buying a gift for any of these occasions:

- "Baby moon" for soon-to-be parents
- Wedding
- Happy Birthday
- Employee appreciation
- Retirement
- Anniversary
- Thanks for helping
- Getaway for new parents
- Happy holidays
- Promotion



AMENITIES AND POLICIES



108 South Cleveland St.
Merrill, WI 54452-2435
715-539-9222
info@yestobliss.com

Wisconsin B&B Association members offer the following amenities unless otherwise indicated by a symbol:

- Full breakfast
- Smoking permitted outside only
- Some or all private baths
- Facility inappropriate for children
- Pet-free environment, and
- No handicapped access.

Cities are listed alphabetically.

Cities located in Door County, Jackson County, LaCrosse County, and Waupaca County are grouped under their County name.



KEY TO SYMBOLS

- Continental Plus breakfast
- Shared bath
- Pets welcome/inquire
- Resident pets only
- Smoke-free property
- Smoking allowed
- Children welcome/inquire
- Wheelchair accessible
- ADA handicapped accessible
- Whirlpools in some/all guestrooms
- A/C in some/all guestrooms
- TV/VCR/DVD in some/all guestrooms
- Fireplace in some/all guestrooms
- Business friendly
- Internet in some/all guestrooms
- Two beds in some guestrooms
- Travel Green Certified. Property committed to environmental, social, and economic sustainability

ALBANY 53502 MAP:F9



Albany House

405 S. Mill Street
866-977-7000
innkeeper@albanyhouse.com
albanyhouse.com

This century-old country house has welcomed guests for 20 years. Six unique bedrooms. Memorable breakfasts. Two



bicycle trails, canoeing, antiquing, galleries, wineries, breweries, cheese tours.
6 rms. \$99-\$229

ALGOMA 54201 MAP:I5



Havenly Inn, LLC

519 Third Street
920-487-0217
innkeeper@havenlyinn.com
havenlyinn.com

This yesteryear inn takes privacy to a new level, offering one space – yours. 2,600 square ft. to enjoy yourself or with friends.



A terrific alternative to a condo. 3 rms. \$155-\$399

APPLETON 54911 MAP:H6



Franklin Street Inn, LLC

318 E. Franklin Street
920-993-1711
info@franklinstreetinn.com
franklinstreetinn.com

Appleton's premier award winning inn: ideal for vacation, business, wedding, anniversary and getaways. Open our door



for great hospitality! Franklin Street Inn – where royal treatment begins.
4 rms. \$99-\$299

APPLETON 54915 MAP:H6



The Roost B&B

1900 South Lee Street
920-882-8427
larryandjan@theroostbandb.com
theroostbandb.com

Featured as "The Best Room in The House" in Luxury Living magazine. The Roost is Appleton's newest, most luxurious



B&B. European flair of this cozy inn is a romantic oasis. 4 rms. \$129-\$179

ARLINGTON 53911 MAP:F7



ASHLAND 54806 MAP:D2



BARABOO 53913 MAP:F7



Inn at Wawanesee Point

E13609 Tower Road
608-355-9899

info@innatwawanessepoint.com
innatwawanessepoint.com



The Inn at Wawanesee Point offers the most scenic, peaceful and romantic getaway in Wisconsin. A majestic 42-acre estate nestled in the Baraboo Bluffs, next to Devil's Lake State Park. Enjoy luxurious rooms with private baths. In addition to a gourmet breakfast, guests traverse the 2.5 miles of private hiking trails, then relax in the Indigo Lounge where wine and cheese are served daily. 4 rms. \$189-\$299



Pinehaven B&B

E13083 Hwy 33
608-356-3489
pinehavenbnb.com

Come to the country. Enjoy our small spring-fed lake, scenic view, river walk gazebo and flower gardens. The two bedroom cottage has a double whirlpool,



fireplace and kitchen. Check our website. 5 rms. \$99-\$145

BAYFIELD 54814 MAP:D1

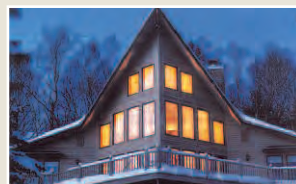


Apple Grove Inn

85095 Hwy 13
888-777-9558
kathy@applegroveinn.net
applegroveinn.net



Lovely country inn, with views of Lake Superior, located just minutes from Bayfield. A relaxing getaway destination with beautiful gardens, orchard and welcoming front porch. 4 rms. \$99-\$135



Artesian House

84100 Hatchery Road
715-779-3338
artesian@ncis.net
artesianhouse.com



Comfortably surrounded by nature, yet close to town and lake. A creative mix of contemporary and eclectic. On 26 wooded acres with walking trail popular with both deer and bear. 4 rms. \$100-\$135



Old Rittenhouse Inn

301 Rittenhouse Avenue
888-561-4667
rez@rittenhouseinn.com
rittenhouseinn.com



Victorian Inn & gourmet restaurant. Unique rooms in two historic mansions and guest cottage. Luxury suites, lake views, whirlpools, and fireplaces. Open year-round. Special occasions, events, and weddings. 20 rms. \$110-\$350



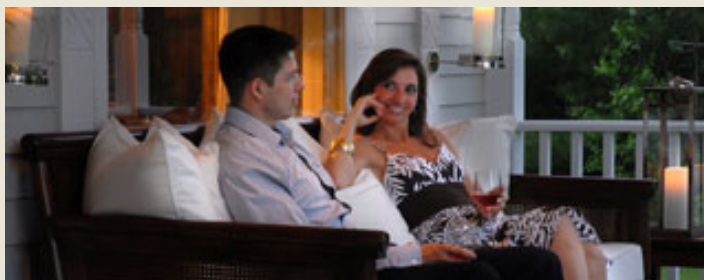
Pinehurst Inn at Pike's Creek

83645 State Hwy 13
877-499-7651
innkeeper@pinehurstinn.com
pinehurstinn.com



Eco-friendly elegance, peaceful setting. Heart-and-soul-warming breakfast. Wander gardens, snowshoe wooded trails, relax in sauna. Connecting adventure, environment, personal rejuvenation. 8 rms. \$115-\$190

BEAVER DAM 53916 MAP:G7



BELLEVILLE 53508 MAP:F8



Cameo Rose Victorian Country Inn

1090 Severson Road
866-424-6340
innkeeper@cameorose.com
cameorose.com



What a difference a night makes at a genuine Madison area getaway on 120 scenic acres – a world of luxury, beauty and immense peace and quiet. “Best breakfast in the Midwest” – Arrington’s. 5 rms. \$139-\$239

BIRCHWOOD 54817 MAP:C3



Cobblestone B&B

319 South Main Street
800-659-4883



cobblestone@centurytel.net cobblestonebedandbreakfast.com

Authentic cobblestone porch and brick walkways welcome you to this elegant, enchanting B&B. Original birdseye maple floors adorn period antiques. Guests enjoy Eggs Benedict next to a crackling fire on a wintry morn. English Garden Suite offers romantic getaway featuring whirlpool for two. Cobblestone has its own gift shop – take a piece of northwood’s charm home. 5 rms. \$79-\$135

BLACK CREEK 54106 MAP:H5



BLUE RIVER 53518 MAP:E8



The Cream Pitcher

16334 Gault Hollow Road
866-391-2900
crmptr@mw.net
mw.net/~crmptr



B&B built on historic farm. Each room has private bath. One room has its own screen porch, another boasts a two-person whirlpool. Hiking trails. Enjoy a quiet stay and a breakfast to remember!

4 rms. \$85

BRODHEAD 53520 MAP:F9



Earth Rider Hotel

929 W Exchange Street
866-245-5276
info@earthridercycling.com
earthridercycling.com



Bike-themed boutique B&B located on the second floor of a historic building. Bicycle on the Sugar River and Badger Trails and backroads supported by a bike shop on the first floor. 5 rms. \$70-\$120

BURLINGTON 53105 MAP:H9



Hillcrest Inn & Carriage House

540 Storle Avenue
800-313-9030



hillcrest@thehillcrestinn.com thehillcrestinn.com

Tranquility awaits guests as they enter the original stone pillars to approach the 1908 Edwardian estate. A panoramic seven-mile view of waterways is framed by foliage and flower gardens on the four-acre property. The opportunity for romance and relaxation is provided in historically decorated guest rooms. Chocolate is featured in our formal four-course breakfast. 6 rms. \$120-\$240

CABLE 54821 MAP:C2



CAMBRIDGE 53523 MAP:G8



Cambridge House B&B

123 East Main Street
608-423-7008
cambridgehouse@charter.net
cambridgehouse-inn.com



Voted “Best of Madison 2007.” Enjoy one of five unique private Jacuzzi suites.

Gourmet breakfast. See our website for all the tasty details! Coming soon-The Mountain Retreat Suite. 5 rms. \$130-\$165

CAMBRIDGE Continued MAP:G8



Covington Manor B&B

W9694 US Highway 12
800-798-7647
carol@covingtonmanorbandb.com
covingtonmanorbandb.com

Covington Manor is surrounded on three sides by extensive gardens, and is as beautiful inside as it is out. You must visit



us and experience firsthand our warm hospitality. 4 rms. \$110-\$145



Lake Ripley Lodge B&B

N4376 Friedel Ave. (E Ripley Road)
877-210-6195
info@lakeripley.com
lakeripley.com

A charming historical inn with lakefront luxuries, 1st floor rooms, grand porch, quiet romantic sunsets and lakefront or



fireside breakfast! Warm hospitality. Boats. Madison 15 m. Open all year.

6 rms. \$89-\$169



Oscar H. Hanson House B&B

303 East North Street
608-423-4379
info@ohhanson.com
ohhanson.com



Romantic 1883 Victorian mansion with a spacious porch, gardens, and fountains.

Experience quiet rooms with fireplaces, stained glass, spacious showers, whirlpools and claw-foot soaking tubs. 4 rms. \$90-\$175

CAMP DOUGLAS 54618 MAP:E7



Sunnyfield Farm B&B

N6692 Batko Road
608-427-3686

soltvedt@mwt.net sunnyfield.net



A biker/hiker's paradise! Ride or hike the two nearby trails or explore rolling country roads. Choose between the second floor three rooms or the third floor studio of this 100-year-old farmhouse located on 160 acres. The studio is ideal for romantic retreats, writer's paradise or home away from home. Located within 25 miles WI Dells. E-Z accesses to I90-94. 4 rms. \$80-\$120

CASHTON 54619 MAP:D7



Country Pleasures B&B

S1075 Weister Creek Road
608-839-4915
info@countrypleasuresbandb.com
countrypleasuresbandb.com

Country Pleasures is a six-bedroom Amish homestead overlooking a pond, on 100 acres of woodland, surrounded by meandering streams, and rock croppings – ideal for quiet walks and hiking.



5 rms. \$75-\$95

CEDARBURG 53012 MAP:I7



Stagecoach Inn B&B

W61 N520 Washington Avenue
888-375-0208
info@stagecoach-inn-wi.com
stagecoach-inn-wi.com

Conveniently located 20 miles north of Milwaukee in downtown historic Cedarburg. The Inn has 12 rooms, pub, and chocolate shop. Walk to shops, restaurants and a winery. A memorable



getaway. 12 rms. \$85-\$150



Washington House Inn

W62 N573 Washington Ave
800-554-4717
whinn@execpc.com
washingtonhouseinn.com

The Washington House Inn, an 1886 Victorian cream city brick listed on the National Register of Historic Places,



features 34 inviting guest rooms. This is the ultimate in B&B accommodations. 34 rms. \$95-\$275

HOW TO B&B

WBBA members have reservation, deposit, and cancellation policies. Ask about them when making your reservation.

CHETEK 54728 MAP:C4



CHIPPEWA FALLS 54729 MAP:C5



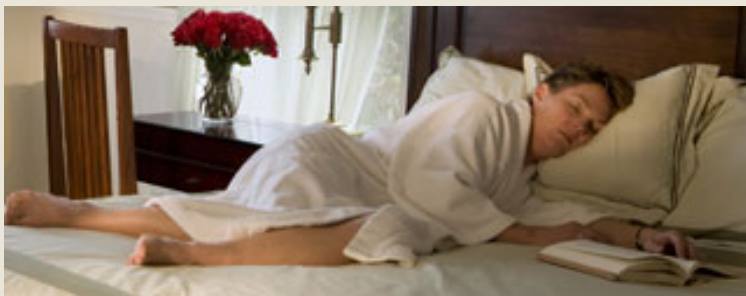
McGilvray's Victorian B&B

312 W Columbia Street
715-720-1600
melanie@mcgilvraysbb.com
mcgilvraysbb.com

Experience friendly hospitality. Restored turn-of-the-century home in a historic city. A warm welcome and a scrumptious



breakfast are top priorities in this grand old Victorian home. 3 rms. \$89-\$125



COLOMA 54930 MAP:F6



Coloma Hotel

132 E. Main Street
715-228-2401
info@colomahotel.com
colomahotel.com

The Coloma Hotel, built in 1876 to serve railroad travelers, has been totally renovated, but retains its old charm. All rooms have private baths, numerous amenities, and free Internet. 8 rms. \$45-\$70



have private baths, numerous amenities, and free Internet. 8 rms. \$45-\$70



River House

W11178 Cumberland Avenue
715-228-3283
agnesb@uniontel.net
yestobliss.com

On a Class A trout stream, River House offers year-round escape. With access to kitchen and family rooms, it's more than a



B&B. Unwind to the murmur of the Mecan River. 3 rms. \$79-\$99

COLUMBUS 53925 MAP:G8



Columbus Carriage House B&B

300 South Dickason Blvd
920-623-4925
info@columbuscarriagehouse.com
columbuscarriagehouse.com

Tree-lined streets, small town feel, just northeast of Madison. A short stroll to



downtown, to the Midwest's largest antique mall; Amtrak stops here from Chicago or Mpls; we'll pick you up! 3 rms. \$110-\$135

CORNUCOPIA 54827 MAP:D1



Fo'c'sle Inn

22580 State Hwy 13
715-742-3337
info@siskiwitbay.com
siskiwitbay.com

In picturesque harbor of Cornucopia. Lakefront lodging. Private rooms with own bath and private entry from 2nd floor



deck. Breakfast served to room. Striking views over Lake Superior. 2 rms. \$89-\$110



O'Bryon's Village Inn

22270 County Road C
715-742-3941
villageinnatcorny@yahoo.com
villageinncornucopia.com

Four tastefully decorated rooms with private baths. A comfortable sitting room w/fireplace and a balcony. Enjoy dinner



in our gracious restaurant known for fresh Lake Superior whitefish and trout. 4 rms. \$60-\$75

CRANDON 54520 MAP:G4



Courthouse Square B&B

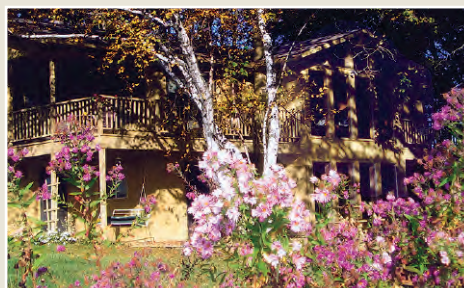
210 E Polk Street
715-478-2549
chousebb@charter.net
yestobliss.com

Serenity on a pastoral lake. You won't find a traffic light in Forest County; you will find lakes, trails, and supper clubs. Smell



the roses – almost – in our dining room's watercolor mural. 3 rms. \$75-\$90

CROSS PLAINS 53528 MAP:F8



Enchanted Valley B&B

5554 Enchanted Valley Road
608-798-4554

serenity@enchantedvalley.com
enchantedvalley.com



Secluded five-acre country haven nestled in hills/panoramic view/forest/enchanting flower-herb-veg gardens. A serene yet energizing Feng Shui space. Cathedral ceiling/window walls. Crackling woodburning stove/gourmet and vegan. Watch birds/wildlife from heavenly down bed. Private patio entrance. Sauna/Jacuzzi/massage. See web: holistic pkgs. and weddings. Between Madison/Spring Green. 2 rms. \$80-\$125

DODGEVILLE 53533 MAP:E8



HOW TO B&B

Most B&Bs have check-in and check-out times. If your plans for arrival or departure differ, let the innkeeper know in advance. Running late? A courtesy call while you are en route will be greatly appreciated.

DOOR COUNTY

BAILEYS HARBOR 54202 MAP:J5



Blacksmith Inn On the Shore

8152 Hwy 57
800-769-8619
relax@theblacksmithinn.com
theblacksmithinn.com



Awaken and relax. Waves lap the shore, sunlight glistens on the water. Breakfast from your private balcony, kayak the harbor, bike to a lighthouse, laze in your hammock. Romance is yours. 16 rms. \$215-\$275



Inn at Windmill Farm

3829 Fairview Road
920-868-9282
windmillfarmwi@aol.com
1900windmillfarm.com



Relax into the quiet intimacy of a 1900 restored farmhouse located in a pastoral setting in central Door County. Inn is situated on 10 acres with original barn, well house, windmill and orchard. 3 rms. \$110-\$125

New Yardley Inn

3360 County E
888-492-7353
newyardley@isp.com
newyardleyinn.com



Built in 1998, the New Yardley Inn sits on 10 acres at the center of lovely Door Peninsula. Spacious rooms, country comfort, warm hospitality, designed with your comfort in mind. 4 rms. \$95-\$205

EGG HARBOR 54209 MAP:I5

Bay Point Inn

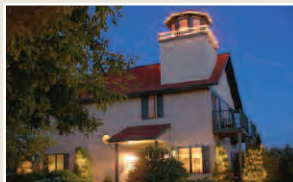
7933 Highway 42
800-707-6660
stay@baypointinn.com
baypointinn.com



Spectacular water views, pristine woodlands, and luxurious decor mirror the luxury of a European vacation villa. Italian porcelain tile baths with Hydro-Thermo massage enhance the romance. 10 rms. \$120-\$279

Door County Lighthouse Inn

4639 Orchard Road
866-868-9088
info@dclighthouseinn.com
dclighthouseinn.com



A lighthouse B&B with nautical decor everywhere. Start each day's adventure with a full breakfast and great conversation with fellow lighthouse and Door County enthusiasts. Great packages. 5 rms. \$130-\$180

Feathered Star B&B

6202 State Hwy 42
877-743-4066
sandy@featheredstar.com
featheredstar.com



Farmhouse style B&B, with all rooms wheelchair accessible. Pets/children welcome. Located between Sturgeon Bay and Egg Harbor. Quiet, yet close to wineries, parks, shopping, summer theatres. 6 rms. \$94-\$140

ELLISON BAY 54210 MAP:J4

Harbor House Inn

12666 State Hwy 42
800-853-9629
innkeeper@door-county-inn.com
door-county-inn.com



Nestled in quaint fishing village of Gills Rock, Harbor House Inn offers a water view, private decks, cottages, Victorian rooms, Lighthouse Suite, A/C, DirecTV, whirlpool & sauna. 15 rms. \$79-\$199

Hotel Disgarden B&B

12013 Hwy 42
920-854-9888
hoteldisgarden@dcwis.com
hoteldisgarden.com



Our year-round cozy waterfront B&B hosts seven lovely suites, each with a private bath and sitting area. Each morning we deliver a warm, homemade breakfast to your door in breakfast baskets. 7 rms. \$75-\$130

EPHRAIM 54211 MAP:J4



Eagle Harbor Inn

9914 Water Street
800-324-5427
nedd@eagleharbor.com
EagleHarborInn.com

Gracious inn offers warm hospitality, down comforters, private baths and wonderful breakfast! Whirlpool, robes, and fireplace.



Homemade treats, wifi, indoor pool, sauna and fitness room. 9 rms. \$98-\$195



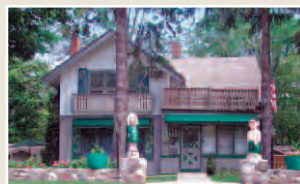
French Country Inn of Ephraim

3052 Spruce Lane
920-854-4001
frenchcountryinn@dcwis.com
yestobliss.com

Vintage 1911 "cottage." Garden setting, spacious common areas with magnificent fireplace and period décor. Healthful eateries. "Rent the whole inn" packages.



breakfast. Walk to water, shops and 7 rms. \$69-\$102



Trollhaugen Lodge

10176 Hwy 42
800-854-4118
trollhaugen@dcwis.com
trollhaugenlodge.com

AAA. Hot/cold buffet. Queen bed, prvt baths, wdfprlc, decks, minisuite, king poster bed/sofa sleeper, gasfrplc, wet bar.



Frig/micro, hairdryer, A/C, cable, DVD, WI FI, phone. Otdr whirlpool. 5 rms. \$90-\$150

FISH CREEK 54212 MAP:J4



Juniper Inn

N9432 Maple Grove Road
800-218-6960
juniperinn@gmail.com
juniperinn.com

Juniper Inn's great location and panoramic view, along with gracious size and comfortable furnishings, leave all who stay



at this gracious country home yearning for their next visit. 4 rms. \$85-\$195



Thorp House Inn & Cottages

4135 Bluff Lane
920-868-2444
innkeeper@thorhouseinn.com
thorhouseinn.com

Historic lodging in the heart of Fish Creek. Choose from elegant guest rooms or private cottages. Inspiration for LaVyrle



Spencer's best selling Bittersweet. Open year round. Off season rates.

11 rms. \$95-\$215



White Gull Inn

4225 Main Street, POB 160
800-624-1987
innkeeper@whitegullinn.com
whitegullinn.com

Warmth, charm and tradition are in abundance at this historic inn, close to everything in Fish Creek, yet off the main



highway. Serving breakfast, lunch, dinner and traditional Door County fish boils. 17 rms. \$155-\$285

SISTER BAY 54234 MAP:J4



Church Hill Inn

425 Gateway Drive
800-422-4906
churchhillinn@churchhillinn.com
churchhillinn.com

The Inn combines the best of a large B&B with the luxuries of an elegant hotel. We include a full breakfast, outdoor pool, exercise room, sauna, jacuzzi, WiFi, and pub-style bar. 34 rms. \$69-\$179



Inn On Maple

2378 Maple Drive
920-854-5107
innonmaple@dcwis.com
innonmaple.com

Historic B&B beneath the bluff in Door County. Full breakfast. In-town location is walking distance to village activities.



Comfortable rooms/priv. baths. Gathering room w/ fireplace, TV. 6 rms. \$85-\$120



Woodenheart Inn

11086 Hwy 42
877-854-9097
innkeeper@woodenheart.com
woodenheart.com

As featured in Door County Living Magazine, "exceptional" describes our log home in the woods. The great room, stone



fireplace, baby grand, gazebo, gardens and many other amenities will delight you. 5 rms. \$110-\$134

STURGEON BAY 54235 MAP:I5



Black Walnut Guest House

454 N 7th Avenue
877-255-9568
stay@blackwalnut-gh.com
blackwalnut-gh.com

Our beautifully landscaped guest house awaits you. Relax in a bubbly whirlpool,



cuddle up to a warm fireplace, enjoy breakfast served to your room. Just a short walk to shops and restaurants. 4 rms. \$99-155



STURGEON BAY Continued MAP: I5



Colonial Gardens B&B

344 N 3rd Avenue
920-746-9192
relax@colgardensbb.com
colgardensbb.com

From our historic 3rd Avenue vantage point, you'll enjoy spectacular views of the big ships and the bay. Romance is always



in the air with breakfast delivered to your suite each morning.
7 rms. \$115-\$185



Garden Gate B&B

434 N. 3rd Avenue
920-743-9618
stay@doorcountybb.com
doorcountybb.com

Our lovely, 1890 Victorian invites you to experience romantic elegance and friendly hospitality. Located two blocks from downtown. And remember "Breakfast is our signature!" 4 rms. \$100-\$145



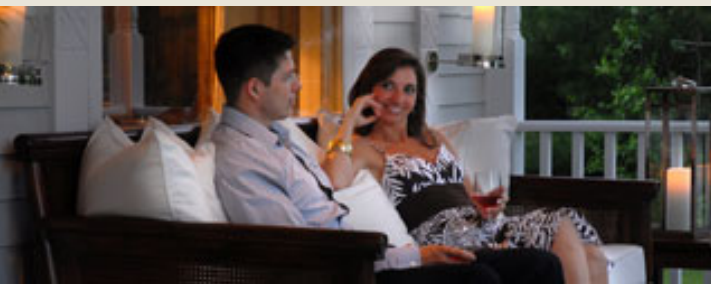
Inn at Cedar Crossing

336 Louisiana Street
920-743-4200
innkeeper@innatcedarcrossing.com
innatcedarcrossing.com

Experience warm hospitality and inviting rooms, each a romantic getaway. Delicious full breakfast with choice of entrées and afternoon refreshments. Come and be pampered. Open all year.



9 rms. \$75-\$195



Little Harbor Inn

5100 Bay Shore Drive
920-743-3789
littleharborinn@dewis.com
littleharborinn.com

Waterfront suites with whirlpools and fireplaces for your romantic getaway. Enjoy sunbathing, paddleboat, rowboat,



fishing from our private pier, or an evening bonfire at water's edge.

8 rms. \$95-\$175



Quiet Cottage B&B on the Lake

4608 Glidden Drive
920-743-4526
dsween@quietcottage.com
quietcottage.com



Door County's only one suite B&B, hidden away on the shores of Lake Michigan. A romantic ambiance abounds, as you are the only guests to be pampered by this charming little jewel. 1 rm. \$180-\$250



Reynolds House B&B

111 S. 7th Avenue
877-269-7401
hahull@reynoldshousebandb.com
reynoldshousebandb.com



I love what I do and it shows. I sit with guests and show them things to see and do here. I serve an award-winning, full gourmet breakfast. Come and enjoy my elegant but relaxed way of life.

5 rms. \$80-\$170



Sawyer House B&B

101 S Lansing Avenue
888-746-1614
sawyerhouse@itol.com
bbonline.com/wi/sawyer



Warm hospitality in an antique furnished 1902 Victorian home. Whirlpools, fireplaces, private baths, TV, small refrig.

Full homemade breakfasts/sweet treats. Open all year come and enjoy Door County. 5 rms. \$90-\$200



Scofield House

908 Michigan Street
920-743-7727
stay@scofieldhouse.com
scofieldhouse.com



Experience the welcoming warmth of a traditional, authentic B&B. A pleasing mix of old Victorian elegance and modern

conveniences combine to provide the perfect place for relaxation.

6 rms. \$80-\$220

HOW TO B&B

How is breakfast served? Some inns offer breakfast in-room, others have tables for two, still others have family-style dining, or a combination of these. Choose the style that you prefer! And please discuss dietary restrictions when you make your reservation.



DOOR COUNTY – Continued
STURGEON BAY Continued MAP:I5



White Lace Inn

16 N 5th Avenue
 877-948-5223



Romance@WhiteLaceInn.com WhiteLaceInn.com

Our romantic Victorian inn features 18 beautifully appointed guest rooms in four historic homes connected by lovely gardens. Fine antiques, plush linens, oversized whirlpools, and inviting fireplaces furnish the rooms and suites. We invite you to experience our Door County hospitality and attention to every detail. Open year round. 18 rms. \$70-\$235

EAGLE 53119 MAP:H8



Eagle Centre House B&B

W370 S9590 State Road 67
 262-363-4700

info@eagle-house.com
 eagle-house.com

Recreate a visit to an 1846 Greek Revival stagecoach inn decorated in period antiques. It's the closest you'll get to New England in

the Midwest. On 20 acres. Featured in Country Living. 5 rms. \$109-\$189



EAGLE RIVER 54521 MAP:F3



Inn at Pinewood, Inc.

1820 Silver Forest Lane
 715-477-2377

pinewood@nnex.net
 inn-at-pinewood.com

Romantic B&B log cabin resort. Antiques from the time on private lake. Private baths, balconies, suites. Perfect for small

weddings, reunions, meetings. Full breakfast, boat rentals, fishing. 8 rms. \$109-\$154



EAST TROY 53120 MAP:H8



Pickwick Inn

2966 Union Street
 262-642-5529

dmoyer2@wi.rr.com
 pickwickinn.com

Our Victorian home is decorated with antiques and furnished for comfort. Our rooms have queen size beds and fireplaces;

two have double person whirlpools. Relax and enjoy a great stay.

4 rms. \$85-\$125



EAU CLAIRE 54701 MAP:C5



Atrium B&B

5572 Prill Road
 888-773-0094

info@atriumbb.com
 atriumbb.com

Enjoy stained glass windows, wine and cheese in the atrium, summer hiking and winter snowshoeing on 15 wooded acres.



Be spoiled with breakfast served to your double whirlpool, fireplace suite.

4 rms. \$120-\$190



EAU CLAIRE 54702 MAP:C5



Otter Creek Inn

2536 Hwy 12
 866-832-2945



info@ottercreekinn.com ottercreekinn.com Each antique-filled guest-room has a whirlpool for two, coffeemaker, wireless Internet, TV and VCR!

Many also have a fireplace, mini-frig. Breakfast menu has choice of entrée, serving time, breakfast-in-bed. Spacious three-story English Tudor, country-Victorian decor, inground swimming pool, located on wooded acre – all within the city limits! Many fine restaurants, biking trail nearby. 6 rms. \$100-\$210

ELKHORN 53121 MAP:H9



Ye Olde Manor House

N7622 US Hwy 12
 262-742-2450

innkeeper@yeoldemanorhouse.com
 yeoldemanorhouse.com

Relax and rejuvenate in our lovely B&B.

Enjoy delicious breakfasts; vegetarian and vegan meals are available. Located across

the road from Lauderdale Lakes, this is the perfect spot to live a charmed life.

4 rms. \$75-\$175



ELROY 53929 MAP:E7



East View B&B

33620 County P Road
 608-463-7564

eastview@centurytel.net
 eastviewbedandbreakfast.com

Enjoy view overlooking hills and valleys encircled by mist or beautiful sunrise.

View the stars, moon at night. Bike the

Elroy-Sparta, & 400 trails. Visit Amish farms, WI Dells. 3 rms. \$80-\$80



FALL RIVER 53932 MAP:G7



Fountain Prairie Inn & Farms

W1901 State Road 16
920-484-3618
priske@centurytel.net
fountainprairie.com

A 17 room Victorian that serves local food and offers picturesque farm tours. An ecologically healthy 545 acre farm that produces gourmet beef and pork. 5 rms. \$99-\$189



FLORENCE 54121 MAP:H3



Lakeside B&B

509 Furnace Street
715-528-3259

lakebb@borderlandnet.net
northern-destinations.com/lakeside



Lakeside was built on the shores of Fisher Lake in Florence, WI in 1993. We start your day with a five-course, hot breakfast. In the afternoon you can take a hike to a waterfall, or just enjoy swimming or boating on the lake. Relax with a massage and a hot tub before returning to a glowing fireplace in your bedroom. Featured in Country, Midwest and Chicago Lake Home magazines. 8 rms. \$85-\$100

FOND DU LAC 54935 MAP:H7



Red Brick Inn

42 N Main Street
800-779-6768
Samuelfdl@aol.com
redbrickinnwi.com

Located in the heart of Fond du Lac's Main St Historic District, history meets luxury. Beautifully restored luxury suite



within walking distance to restaurants, entertainment and shopping. Visit RedBrickInnWI.com 1 rm. \$90-\$250

FORT ATKINSON 53538 MAP:G8



The Lamp Post Inn

408 South Main Street
920-563-6561
lampostinn@compufort.com
thelamppostinn.com

We opened our antique-filled B&B 20 yrs ago and have been pampering guests ever since. We're located six blocks from the



Fireside Dinner Theatre and four blocks from great shopping. 3 rms. \$75-\$120

GRANTSBURG 54840 MAP:A3



Smoland Prairie Homestead Inn

11658 State Hwy 70
715-689-2528
smolandinn@smolandinn.com
smolandinn.com

Take a step back in time and stay one or more nights in this historical 19th



century hand-hewn two story log farm house. Enjoy taking a sauna, long walks, or just sitting by a fire at night. Featured in Country Extra magazine. 4 rms. \$40-\$100

GREEN BAY 54301 MAP:H5



Astor House

637 S. Monroe Avenue
920-432-3585
astor@execpc.com
astorhouse.com

Warm and welcoming hospitality, close to everything in Green Bay! Guests love the romantic little touches in our comfortable rooms. Free Wi-Fi! Please visit our website for more details. 5 rms. \$79-\$169



GREEN LAKE 54941 MAP:G6



Angel Inn

372 South Lawson Drive
920-294-3087
info@angelinns.com
angelinns.com

Beautifully restored lakefront mansion. Featuring: Ultra Spa tubs, fireplaces, TV/VCR, prvt.baths with Italian limestone showers. Spectacular lake views, and a gourmet breakfast served lakefront.



5 rms. \$115-\$195

GREEN LAKE Continued MAP:G6



McConnell Inn

497 S. Lawson Drive
888-238-8625
info@mcconnellinn.com
mcconnellinn.com

We are happy to be starting our 22nd year of innkeeping. As always, your breakfast is prepared by an experienced pastry chef.
5 rms. \$80-\$175



Miller's Daughter B&B

453 North Street
866-266-0717
info@millersdaughter.com
millersdaughter.com

Rediscover simple pleasures and relax in grand victorian style while enjoying the amenities of today. Beautifully decorated



inn, lush gardens, relaxing porch and a full gourmet breakfast.

5 rms. \$85-\$145

HALES CORNERS 53130 MAP:H8



The Lawson House B&B

10265 W Forest Home Avenue
414-427-8483
thelawsonhouse@sbcglobal.net
thelawsonhouse.com

A 1914 Prairie Style Bungalow decorated in Mission and Arts & Crafts style. The original woodwork, classic fireplaces, large



common areas and three bedrooms beckon you back to an earlier time.

3 rms. \$85-\$125

HOW TO B&B

Do B&Bs/Inns offer private bathrooms? Yes – nearly all WBBA member B&Bs/Inns offer private bathrooms.

HARTFORD 53027 MAP:H7



Westphal Mansion Inn B&B

90 S. Main Street
262-673-7938
terpstra7938@sbcglobal.net
westphalmansioninn.com

1913 English Tudor mansion, overlooking downtown, is a blend of history, luxury and charm. Suites are decorated with



antiques, elegant linens and vintage bed, creating an old world ambience.

8 rms. \$85-\$218

HAYWARD 54843 MAP:C3



McCormick House

10634 Kansas Avenue
715-934-3339
info@mccormickhouseinn.com
mccormickhouseinn.com

In the heart of the beautiful northwoods. Furnished entirely with European/Asian antiques and modern furniture from some of America's leading interior designers. Imported fine guest amenities.



6 rms. \$135-\$195

HAZEL GREEN 53811 MAP:E9



Wisconsin House Stage Coach Inn

2105 Main Street, POB Box 71
877-854-2233
wishouse@mhtc.net
wisconsinhouse.com

Built circa 1846, the inn has been rehabbed for your comfort. Enjoy our



hearty full breakfast each morning before visiting the area attractions in Platteville, Dubuque, and Galena. Welcome! 8 rms. \$75-\$125

HAZELHURST 54531 MAP:F3



Hazelhurst Inn B&B

6941 Hwy 51
715-356-6571
hzhrstbb@newnorth.net
hazelhurstinn.com

Welcome to the Hazelhurst Inn.



The B&B is a country style inn nestled on an 18 acre wooded parcel in the heart of Wisconsin's northwoods. We invite you to relax and make yourself "at home." Hope to see you soon! 4 rms. \$84.95-\$89.95

HOLCOMBE 54745 MAP:C4



HORICON 53032 MAP:G7



Honeybee Inn B&B

611 East Walnut Street
920-485-4855

innkeeper@honeybeeinn.com
honeybeeinn.com



Be immersed in impeccably clean and luxurious accommodations! Come see why TripAdvisor.com has rated us the #1 bed and breakfast in Wisconsin! Memorable gourmet breakfast, whirlpools, body jet showers, fireplaces, WiFi, featherbeds, and luxury linens. Just blocks from Horicon Marsh and Blue Heron Landing. Horicon is the birding, hiking and canoeing mecca of the midwest. 4 rms. \$130-\$250

HUBERTUS 53033 MAP:H8



Cold Spring Inn

1033 Plat Road
262-628-9836
info@coldspringinn.com
coldspringinn.com

A secluded treasure in the heart of the Holy Hill Area of the Wisconsin Kettle Moraine, this beautiful site includes a



river valley and new boutique vineyard. 3 rms. \$130-\$289

HUDSON 54016 MAP:A5



Escape by the Lake

922 Sally's Alley N
715-381-2871
relax@escapebythelake.com
escapebythelake.com

Escape by the Lake will transcend you to a relaxing and inviting oasis. This lakeside retreat frames an ever changing painting of mother nature . . . come, enjoy an escape by the lake. 2 rms. \$149-\$179



Phipps Inn

1005 Third Street
715-386-0800
phippinn@presenter.com
phippinn.com

The grand dame of Queen Anne houses in Hudson. A lavish breakfast, presented on gleaming china and crystal, is served in your room or the dining room. The Phipps is a retreat to enchant you.



6 rms. \$139-\$219

JACKSON COUNTY

TAYLOR 54659 MAP:D6



Brambleberry B&B

N3684 Claire Road
608-525-8001

innkeeper@brambleberrybandb.com
brambleberrybandb.com



A world away, we make romantic country weekends memorable and affordable! Relax and reconnect in our English/Scottish-style home. Elegant canopy beds, whirlpools, fireplaces, private nature trails, lavish breakfasts. Easy drive to antiques, Amish farms, winery, restaurants, breweries, state parks, scuba diving, canoeing, Mississippi River, biking, skiing, and snowmobile trails. 4 rms. \$89-\$149

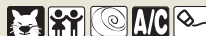
JANESVILLE 53545 MAP:G9



Scarlett House

825 E Court Street
608-754-8000
Mscarlette@hotmail.com
scarletthouse.com

Spend the night in another century. Historical Reg. property: original woodwork, fireplace, wrap around porch, Jacuzzi suite, full breakfast, antiques. Weekday specials. Gift certificates. 3 rms. \$55-\$115



KEWAUNEE 54216 MAP:I5



HOW TO B&B

There is a Google map for each B&B at: www.yestobliss.com

HOW TO B&B

Alphabetic list of B&Bs on pages 66-67

LA CROSSE COUNTY

LA CROSSE 54601 MAP:C7



Four Gables B&B

W5648 US Hwy 14-61
608-788-7958
forgables@juno.com
bedandbreakfast.com/listing.aspx?id=602305

Four Gables is a unique Victorian Queen Anne home listed on the National

Register. Tastefully furnished with antiques. Conveniently located. Close to many attractions. Hospitality plus. 3 rms. \$60-\$95



Wilson Schoolhouse Inn

W5720 US Hwy 14-61
608-787-1982
usdk@centurytel.net
wilsonschoolhouseinn.com

Wilson Schoolhouse Inn, a historic one-room school, has been restored and elegantly furnished. Located on 10 acres, min

from downtown La Crosse, accommodates six-eight adults. 1 rm. \$120-\$150

ONALASKA 54650 MAP:C6



Lumber Baron Inn

421 2nd Avenue N
608-781-8938
lumberbaroninnwi@aol.com
yestobliss.com

The Lumber Baron Inn, is a historic bed and breakfast overlooking Lake Onalaska. The Inn has retained all original wood-

work, gaslights, and magnificent stained glass windows. Enjoy an elegant breakfast. 5 rms. \$89-\$149



Rainbow Ridge Farms B&B

N5732 Hauser Road
608-783-8181
rffbnbl@yahoo.com
rainbowridgefarms.com

Your country farmhouse getaway near La Crosse. Relax at our 35-acre working

farm. Great beds, private baths! Enjoy bike trails, antiques, fests, cross country and downhill skiing, and beauty! 4 rms. \$75-\$165

LA FARGE 54639 MAP:D7



Trillium

E10596 East Salem Ridge Rd
608-625-4492
info@trilliumcottage.com
trilliumcottage.com

Private cottage; organic family farm; fully furnished; complete bath; fireplace; full kitchen; near state parks, Kickapoo River,

Mississippi, Kickapoo Valley Reserve, Organic Valley. 2 rms. \$70-\$110



LA VALLE 53941 MAP:E7



Mill House on Main

203 East Main
608-985-7900
lynda@mwt.net
yestobliss.com

Great getaway! Restful surroundings with personal service. Theme rooms, game table, walking distance to restaurants, 400 Bike

Trail, art gallery, antiques. Enjoy delicious breakfast menu. 6 rms. \$60-\$125



September Farms B&B

S1472 McKinney Road
608-985-7375
septfarms@mwt.net
septemberfarms.com

Country setting; wrap-around porch with scenic view of valley; 400 Bike Trail crosses driveway; 25 minutes to Wisconsin Dells;

Baraboo River and two lakes close by; Family fun for all. 5 rms. \$69-\$99



LAC DU FLAMBEAU 54538 MAP:E3



HOW TO B&B

INN-Credible Gift Certificates – good at every WBBA member inn. Details on page 1.

LAKE GENEVA 53147 MAP:H9



Lazy Cloud Lodge

W4033 Hwy 50
262-275-3322
love@lazycloud.com
lazycloud.com

Enjoy rustic romance with luxurious amenities. Private outside entrance leads to your suite with double whirlpool, cozy fireplace, canopy bed, candles, chocolates, bubble bath. 10 rms. \$130-\$230



LAKE HOLCOMBE 54731 MAP:D4



Whispering Pines B&B

4599 Whispering Pines Dr., Conrath
715-720-4957
bmv_1@hotmail.com
yestobliss.com

A spacious earth-sheltered "bream" home with 500 ft. of Lake Holcombe frontage. Sunset view from your room overlooking the lake, explore walking trails, watch wildlife. 2 bedrooms. \$100 each



LAKE MILLS 53551 MAP:G8



Fargo Mansion Inn

406 Mulberry Street
920-648-3654
fargo@charter.net
fargomansion.com

We have been welcoming guests for over 20 years! National Registry property. All private marble baths. Romantic destination! Close to bike trail, Rock Lake, Aztalan State Park. 5 rms. \$99-\$185



Sweet Autumn Inn

1019 South Main Street
888-648-8244
innkeeper@sweetautumninn.com
sweetautumninn.com

Guests say: great hospitality, great beds and great breakfasts! Enjoy spacious grounds, lily pond, veranda or a bonfire.



Let us pamper you too! 3 rms. \$79-\$119

LOMIRA 53048 MAP:H7



White Shutters

W265 County H
920-269-4056
whiteshutters@nconnect.net
thewhiteshutters.com

We have been welcoming guests since 1991 to enjoy the king-of-the-hill view from our 1890 country home. Located on a quiet road away from the bustling activity of everyday life.



2 rms. \$80-\$100

MADISON 53704 MAP:F8



Annie's Garden

2117 Sheridan Drive
608-244-2224
innkeeper@anniesinmadison.com
anniesinmadison.com

Fascinating romantic house. Stunning art. Antiques, music, books galore! By scenic park, lake, woods, trails. Stone fireplace.



Jacuzzi for two. Theater, popcorn. One booking at a time, yours!
1 rm. \$169-\$209

MADISON 53711 MAP:F8



Arbor House, An Environmental Inn

3402 Monroe Street
608-238-2981
arborhouse@tds.net
arbor-house.com

National award-winning inn, model for urban ecology. Featured in Travel and Leisure, Midwest Living, Fine Living Network. Ideal for retreats and reunions. 8 rms. \$110-\$230



MADISON 53703 MAP:F8



Hotel Ruby Marie

524 East Wilson Street
608-327-7829
rubymarie@tds.net
rubymarie.com

Our hotel is a renovated historical hotel, built in the 1800s. It is located in Madison across from Lake Monona. A unique hotel with all the modern amenities. 15 rms. \$82-\$290



HOW TO B&B

Alphabetic list of B&Bs on pages 66-67



MADISON Continued MAP:F8



Parsonage B&B

5508 Brodhead St., McFarland 53558
877-517-9869
parsonage@chorus.net
parsonagebandb.com

Quality Madison area B&B, 16 mins. from downtown. Hardwd flrs, radiator heat, A/C, low odor cleaning products for a clean and healthy environment. Use organic eggs, fresh fruits for breakfast. 6 rms. \$64-\$125



MADISON 53704 MAP:F8



Speckled Hen Inn

5525 Portage Road
877-670-4844



innkeeper@speckledheninn.com speckledheninn.com

Enjoy true hospitality at this 50-acre country estate 7.5 miles from the Capitol and UW. A favorite for couples seeking a peaceful getaway, business travelers seeking a home-away-from-home, and small groups gathering to share good times. Certified by Travel Green WI and rated #1 B&B in Madison by guests on Trip Advisor, "little comforts make a big difference." 4 rms. \$110-\$195

MAIDEN ROCK 54750 MAP:B5



Harrisburg Inn B&B

W3334 State Road 35
715-448-4500
harrisburginn@yahoo.com
harrisburginn.com

The Harrisburg Inn nestles on a bench of bluff land above a wide sweep of the Mississippi River called Lake Pepin.



The panorama encompasses more than 20 miles of bluffs on both sides of the valley. 4 rms. \$95-\$145

MANITOWOC 54220 MAP:I6



Bedell Hill

4825 Broadway Street
920-683-3842
gcgottier@comcast.net
yestobliss.com



Welcome to the 1870 home of a Civil War veteran. A beautifully restored Greek Revival home on two acres sits above the Manitowoc River. Amenities. Private entrance. Antique queen bed, kitchenette. 1 rm. \$90-\$120

1870 home of a Civil War veteran. A beautifully restored Greek Revival home on two acres sits above the Manitowoc River. Amenities. Private entrance. Antique queen bed, kitchenette. 1 rm. \$90-\$120

Westport B&B



635 N 8th Street
920-686-0465

stay@thewestport.com thewestport.com

Relax in our 1879 Victorian home, a blend of elegance and comfort. Located in Manitowoc's Historic District. Near Lake Michigan, museums, trails, shops, and dining. Queen beds, private baths. Spa suites, have whirlpools and fireplace. Room includes stocked refrigerator, flowers, snacks, fresh pastries, and a four-course candlelight breakfast. Massages and bike rental available. 4 rms. \$125-\$165

MARINETTE 54143 MAP:I4



Lauerman House Inn

1975 Riverside Avenue
715-732-7800
innkeeper@mmvictorian.com
lauermanhouse.com



1910 estate of local businessman. Hailed as one of the most beautiful examples of Colonial Revival architecture. Elegant rooms, private bathrooms, fireplace, jacuzzi tubs, full restaurant and bar. 7 rms. \$75-\$175



M&M Victorian Inn

1393 Main Street
715-732-9531
innkeeper@mmvictorian.com
mmvictorian.com



A fully restored Queen Anne Victorian in 1886. Five luxurious rooms, ensuite bathrooms, jacuzzis, fireplaces, full bar. Partner Inn with Lauerman House Inn with a full restaurant. 5 rms. \$75-\$165

MAYVILLE 53050 MAP:H7



River's Bend Inn

257 North German Street
920-387-2224
riversbendinn@copper.net
riversbendinn.com

1880/1926 brick/stone home on two acres, 600 ft. frontage on Rock River. River views from guest rooms with queen size beds. "More than a night's lodging – a delightful experience." 3 rms. \$70-\$85



MAZOMANIE 53560 MAP:F8



Walking Iron B&B

21 State Street
877-572-9877



reservations@walkingiron.com walkingiron.com

Escape to elegance! Step back in time in our 1865 brick Victorian Italianate... boasting five elegantly appointed guest rooms with private baths and whirlpools, we blend luxury with history! Enjoy our impressive amenities, savor the passage of time relaxing on our wrap-around porches, or stroll the stream just steps from your room, we're the best kept secret in Southern Wisconsin! 5 rms. \$90-\$160

MENOMONIE 54751 MAP:B5



Country Comfort

N5126 410th Street
715-233-0113
info@staycountrycomfort.com
staycountrycomfort.com

Overlooking the Red Cedar River and bike trail, Country Comfort is your place of rest and relaxation. It's all about the bed and the breakfast – blissful. Come – let us pamper you! 4 rms. \$89-\$119



MEQUON 53097 MAP:I8



American Country Farm B&B

12112 N. Wauwatosa Road
262-242-0194
americancountryfarm@yahoo.com
americancountryfarm-bedandbreakfast.com

Ultimate privacy! Stone cottage, patio, kingbed, woodburning fireplace, kitchen, bath, A/C, cable tv. Four miles to historic Cedarburg. Bike trail, covered bridge. Cozy cottage and gardens. A rare find! 2 cottages \$95-\$159



Gresley House B&B

13907 N Port Washington Rd
888-270-3875
innkeeper@gresleyhouse.com
gresleyhouse.com

Situated on 20 acres of farmstead land, a comfortable and quiet environment is created for your home-away-from-home.



Close to Cedarburg festivals, Port Washington lakescape, more. 4 rms. \$75-\$95

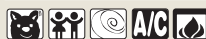
MILWAUKEE 53208 MAP:I8



Acanthus Inn B&B

3009 W Highland Blvd
414-342-9788
wbacklund@wi.rr.com
milwaukeebedandbreakfast.com

The perfect urban retreat where each room has its own special character. Breakfasts are prepared with attention to your desires. Just minutes from metro attractions & downtown. 6 rms. \$105-\$235



Brumder Mansion B&B

3046 W. Wisconsin Avenue
414-342-9767
brumdermansion@sbcglobal.net
brumdermansion.com

1910 English Arts & Crafts mansion spiced with Victorian and Gothic elements, close to Milwaukee's city center and nightlife. Lower level houses a professional theatre. 5 rms. \$89 - \$300



MINERAL POINT 53565 MAP:E8



Brewery Creek

23 Commerce
608-987-3298
info@brewerycreek.com
brewerycreek.com

Three buildings. 1854 Brewery Creek Inn and Brewpub with five luxurious rooms – whirlpools, fireplaces and more. Or charming 1836 & 1845 stone cottages on Shake Rag. 7 rms. \$140-\$190



MINOCQUA 54548 MAP:F3



Sill's Lakeshore B&B Resort

130 Lakeshore Drive
715-356-3384
sills@newnorth.net
sillslakeshorebandb.com

On Lake Minocqua, this serene and luxurious B&B includes a cottage and guest house. Walk into town; bike the trail; or find a lakeside chair – all steps from your doorway – glass of wine anyone? 3 rms. \$130-\$260





MONROE 53566 MAP:F9



Victorian Garden B&B

1720 16th Street
888-814-7909
yestobliss.com

The charm of our eclectic Victorian home still remains today. Relax and enjoy our wrap-around porches and our Victorian gardens. Come stay and visit with us.



The pleasure is all ours! 3 rms. \$89-\$109

MOUNT HOREB 53572 MAP:F8



MUSCODA 53573 MAP:E8



Victorian Rose B&B

323 S Wisconsin Avenue
608-739-4319
vrosebb@mwt.net
victorianrosebedandbreakfast.net

An elegant Victorian tribute to a lumber baron's reverence for wood is shared with you. The tradition of quality and richness



continues with evening wine and cheese, and formal, full breakfast.

3 rms. \$85-\$125

NEILLSVILLE 54456 MAP:D5



Tufts' Mansion

26 Hewett Street
715-743-3346
tuftsmansion@tds.net
tuftsmansion.com

Built in 1879, Tufts' is filled with the history of Neillsville's most prominent families. Tufts' features live jazz nights in



a candlelit atmosphere. Experience the elegance of yesteryear.

4 rms. \$95-\$135

HOW TO B&B

More B&B details at www.yestobliss.com

HOW TO B&B

Where to find where to stay: www.yestobliss.com

NESHKORO 54960 MAP:F6



Riverview B&B

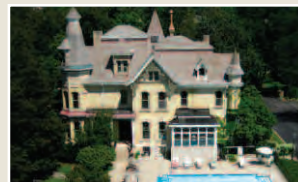
219 West Wall Street
920-293-4423
mebrhode@core.com
theriverviewbnb.com

At Riverview in Neshkoro you'll be greeted with fresh, homemade cookies and a seasonal beverage such as lemonade or



hot cider. Nearby: theaters, trails, shops = excitement or quiet bliss. See for yourself. 3 rms. \$70-\$80

OCONOMOWOC 53066 MAP:H8



Inn at Pine Terrace

351 Lisbon Road
888-526-0588
innkeeper1@innatpineterrace.com
innatpineterrace.com

Rest. Relax. Rejuvenate. Come stay in Lake Country's most romantic inn and enjoy our elegant rooms, scrumptious



breakfasts, outdoor seasonal pool, recreational lakes and welcoming hospitality. 12 rms. \$80-\$185

OCONTO 54153 MAP:I5



Rose of Sharon B&B

1109 Superior Avenue
920-834-9885
rose_bnb@yahoo.com
roseofsharonbnb.net

Once the home of Philip Lingelbach, brewmaster of Oconto Beer. Minutes from the bay and marina. Double size



whirlpool tubs and king beds. Specials every month. Gift shop located downtown. 3 rms. \$95-\$135

OSCEOLA 54020 MAP:A4



St. Croix River Inn

305 River Street
800-645-8820
innkeeper@stcroixriverinn.com
stcroixriverinn.com

The St. Croix River Inn is a magnificent fusion of history and luxury. Enjoy breathtaking views along with all the



comforts you expect from a fine inn. Premier jetted tubs & fireplaces. Experience TIMELESS LUXURY ON THE RIVER. 7 rms. \$135-\$250

OSHKOSH 54901 MAP:H6



Brayton B&B

143 Church Avenue
920-267-0300
braytonbb@ntd.net
braytonbb.net

1867 historic home with modern-day amenities. Each room decorated differently with deep tones and a masculine feel.



Walking distance to downtown shops, restaurants, parks and entertainment.
4 rms. \$89-\$149

PLYMOUTH 53073 MAP:H7



Gilbert Huson House

315 Collins Street
920-892-2222
gilberthusonhouse@execpc.com
husonhouse.com

Classic Victorian located one block to shops and eateries. Minutes to Elkhart Lake, Kohler. Six guest rooms, private



baths, whirlpools. 6 rms. \$85-\$250



Hillwind Farm B&B Inn

N4922 Hillwind Road
877-892-2199
info@hillwindfarm.com
hillwindfarm.com

Glorious views and unequalled amenities await you. Suites w/whirlpools, fireplaces, private porches. Minutes to Kohler Golf,



Sheboygan Lake Front, Kettle Moraine and Cedarburg. Evening wine and sweets. 5 rms. \$99-\$214



Tauschek's B&B Log Home

W5740 Garton Road
920-876-5087
mjtone@verizon.net
tauscheksbedand
breakfastloghome.com

New Log Home B&B opened in 2004. We offer a warm and rustic country



charm. We will provide our guest with a warm country breakfast and a smoke-free facility. 3 rms. \$85-\$175

PORT WASHINGTON 53074 MAP:I7



Port Hotel Restaurant & Inn

101 East Main Street
262-284-9473
innkeeper@theporthotel.com
theporthotel.com

Indulge in the luxury and elegance of this magnificently restored ten room inn. Enjoy gourmet breakfasts, down-filled comforters, romantic fireplaces and breathtaking views of Lake Michigan.



10 rms. \$150-\$275



Port Washington Inn

308 W. Washington St.
877-794-1903



stay@portwashingtoninn.com portwashingtoninn.com

Welcome to historic that's fresh and sparkling, artistic attention to detail, food to love, complimentary beverages, peaceful privacy, a quiet neighborhood, views of the sunrise over Lake Michigan, generous common areas to enjoy with friends, wi-fi. Our location is walkable to restaurants, bike trail, lighthouse, lakefront, parks and an easy drive to Cedarburg, Milwaukee, Sheboygan, Kohler, West Bend. See our website and blog for area attractions!

5 rms. \$125-\$225

PORTAGE 53901 MAP:F7



Cedar Ridge B&B

W6336 Hwy 33 East
608-429-9254
cedarridgebb@yahoo.com
cedarridgebb.com

Nestled in a forest surrounded by rugged hills, visit our quiet, beautiful retreat. Full bath, kitchen/dining/living room, washer/dryer in suite. Recreation and tourist adventures for all ages. 1 rm. \$85-\$130



POYNETTE 53955 MAP:F7



PRAIRIE DU CHIEN 53821 MAP:C8



Neumann House B&B

121 N. Michigan Street
888-340-9971
lneumann@mhtc.net
prairie-du-chien.com

Celebrating 20 years of welcoming guests for a comfortable stay. Walk to historic downtown Main Street District, shops,



restaurants and nightlife. Visit Villa Louis. Felines-in-residence. 3 rms. \$110-\$170

PRESCOTT 54021 MAP:A5



Arbor Inn

434 North Court Street
888-262-1090
thearborinn@gmail.com
thearborinn.com

Rest, renew and rejuvenate at The Arbor Inn. Get pampered with an in-house massage, have breakfast on our grapevine



porches, shop historic Prescott, dine at restaurants with river view decks. 4 rms. \$119-\$189

PRINCETON 54968 MAP:G6



Ellison's Gray Lion Inn

115 Harvard Street
920-295-4101
maureenellison@centurytel.net
yestobliss.com

Enjoy the renaissance of Princeton from our 1898 Victorian home. Unique shops, antiques, and seasonal flea market are



just a short stroll. EAA, Amish, biking, canoeing, and Wisconsin Dells nearby. 4 rms. \$97-\$108

RACINE 53403 MAP:I8



Hughes House B&B

1500 S. Main Street
888-633-3401
dan.dashner@gmail.com
racinebedandbreakfast.com

Overlooking Lake Michigan, Hughes House is a delight to come back to after beaching, sightseeing, yachting, shopping.



Charter our 48-ft. luxury yacht for sunning, touring, or sunset cruise. 4 rms. \$110-\$210

HOW TO B&B

See the centerfold for a Wisconsin B&B map

HOW TO B&B

Stay 10 nights and the 11th night is FREE with our *Frequent Sleeper Passport*. Details on inside back cover.

REEDSBURG 53959 MAP:E7



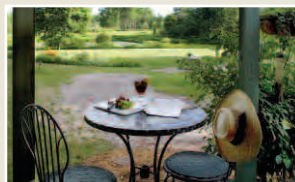
Parkview B&B

211 N Park Street
608-524-4333
info@parkviewbb.com
parkviewbb.com

1895 home located in Reedsburg's Historic District near downtown. Central to Spring Green, Baraboo, Wisconsin



Dells, bike trails, and state parks. Wake up coffee and seasonal homemade breakfasts. 4 rms. \$80-\$98



Pine Grove Park B&B

S2720 County Road V
866-524-0071
info@pinegroveparkbb.com
pinegroveparkbb.com

Each guest house has a private entrance, covered porch and looks out over our varying landscapes and pond. Tucked in the middle of 55 acres, we are a perfect escape for your romantic getaway!



4 rms. \$115-\$175

RIO 53960 MAP:E7



Mill House Inn

W5384 Hwy G
608-429-2195
millhousebandb.com

As our guest, you'll be pampered and given gracious hospitality in our Victorian home. Outdoor seclusion to enjoy natural beauty and wildlife on Duck Creek



canoeing or walking trails. Relax and enjoy. 4 rms. \$100-\$125

RIVER FALLS 54022 MAP:A5



Kinni Creek Lodge & Outfitters

545 N Main Street
715-425-7378
guide@kinnicreek.com
kinnicreek.com

Fly fish – paddle – rest. A cabin, a B&B. It's reversible! Northwoods cabin-style



lodge on a class one trout stream Kinnickinnic. Northern Driftless Area. Guides available. Rent a kayak. 3 rms. \$99-\$200

SHEBOYGAN 53081 MAP:I7



English Manor B&B

632 Michigan Avenue
920-208-1952
englman@excel.net
english-manor.com

Enchanting English Tudor where guest pampering is foremost! English breakfast, Afternoon tea and evening wine and cheese



enjoyed with European elegance. In room fireplaces and king whirlpools.
5 rms. \$129-\$199

SHEBOYGAN FALLS 53085 MAP:I7



Rochester Inn

504 Water Street
920-467-3123
info@rochesterinn.com
rochesterinn.com

Located five blocks from Kohler, home of fine dining, top-rated golf courses, and spa, the Rochester Inn offers incredible.



two-story rooms. Kohler whirlpools, in-room breakfast, and overall privacy.
6 rms. \$109.50-\$184.50



The Fringe, A Country Inn

711 Giddings Avenue
920-467-3172 866-374-6430
info@thefringecountryinn.com
thefringecountryinn.com

A 1922 country farm home converted into a B&B designed for comfort and relaxation. Close to Kohler and Sheboygan.



Space for gatherings to accommodate up to 50 people. 4 rms. \$85-\$155

SIREN 54872 MAP:B3



Lilac Village B&B

7665 Bradley Street
888-891-1207
dwroland@sirentel.net
lilac-b.com

Charming 1930's Dutch Colonial-style home located three blocks off the Gandy Dancer Trail. Play Siren National or



other area golf courses. Hike or bike trails, and Crex Meadows Wildlife Area.
3 rms. \$75-\$125

HOW TO B&B

Stay 10 nights and the 11th night is free with our Frequent Sleeper Passport. Details at www.yestobliss.com

SOLDIERS GROVE 54655 MAP:D7



Inn at Lonesome Hollow

15415 Vance Road
608-624-3429
info@lonesomehollow.com
lonesomehollow.com

Centrally located in the spectacular driftless area. 160 acres of wooded hills, hiking trails, gardens, and pond. Near five state parks, three rivers, trout fishing,



canoeing, Amish, golf. 6 rms. \$119-\$189

SPARTA 54656 MAP:D6



Grapevine Log Cabins B&B

19149 Jade Road
608-269-3619
okgrapevine@centurytel.net
grapevinelogcabins.com

Three rustic, log cabins in a pine setting on a farm. Each sleeps four comfortably.



Quiet romantic atmosphere, hiking trail, gift shop. Breakfast served. Elroy-Sparta Bike Trail nearby. 4 rms. \$95-\$175



Justin Trails B&B Resort

7452 Kathryn Avenue
800-488-4521
info@justintrails.com
justintrails.com

Miles of trails, two disc golf courses, llama treks, pet and child friendly inn on 200



acres. Wisconsin Safari Ride, new spacious log cabins and suites, balcony, porch or deck. Breakfast 7:30-10:00. 6 rms. \$115-\$350



Lighthouse Inn B&B

9529 Gardener Avenue
888-277-1001
info@lighthouseinn.com
lighthouseinn.com

Picture yourself amongst good friendships with a good glass of wine watching an awesome sunset, here, with us. We're waiting. "Everything went perfectly once we got to Sparta!" Own it. 3 rms. \$84-\$164



Strawberry Lace Inn

603 N. Water Street
608-269-7878
strawberry@centurytel.net
strawberrylaceinn.com

Enjoy each room's antique décor and unique charm, enjoy our four-course, sitdown breakfast. We like to think of



our home as comfortably elegant and invite all to come stay and enjoy the experience. 5 rms. \$99-\$165



HOW TO B&B

INN-Credible Gift Certificates – good at every WBBA member inn. Details on page 1.

SPRING GREEN 53588 MAP:E8



Hill Street B&B

353 West Hill Street
608-588-7751
hillstbb@verizon.net
hillstreetbb.com

Queen Anne Victorian home, hand-crafted woodwork. Guests can browse the town's art galleries. Experience Frank Lloyd



Wright's Taliesin, House on the Rock, The American Players Theatre.
7 rms. \$80-\$100

STEVENS POINT 54481 MAP:F5



A Victorian Swan On Water

1716 Water Street
800-454-9886
victorianswan@charter.net
victorianswan.com

Historic 1889 treasure, modern comforts, delicious breakfasts with individual



attention to your needs. Central location in a university city. Outdoor activities nearby. 4 rms. \$80-\$150



Dreams of Yesteryear

1100 Brawley Street
715-341-4525
bonnie@dreamsofyesteryear.com
dreamsofyesteryear.com

Featured in Victorian Homes magazine. On National Historic Register. In beautiful historic neighborhood within



downtown business district. One block from bike trail. "Truly the kind of place Victorian dreams are made of." 6 rms. \$75-\$160



Inn on Main Street LLC

2141 Main Street
715-343-0373
kathysinn@charter.net
innonmainstreet.com

Located across from UWSP campus, this warm, cozy, lannon stone Colonial Revival



with three guest rooms will start your day with a warm smile and delectable breakfast. A Travel Green member. 3 rms. \$65-\$85

STOUGHTON 53589 MAP:F8



Altemus Corners B&B

1345 Tower Drive
608-695-0693
margestokstad@hotmail.com
altemuscornershouse.com

Altemus Corners is an elegant 1870's Federal Style farm home. Enjoy a restful night and hearty farm breakfast in a historic rural Wisconsin setting. Great hospitality. Two miles from I-90.



5 rms. \$50-\$110



Naeset-Roe Inn

126 East Washington Street
608-877-4150
cpovlick@naesetroe.com
naesetroe.com

The perfect place for romance or business. Victorian charm with modern amenities.



Close to all that Stoughton and Madison offer. Come relax and unwind. We're waiting to welcome you. 4 rms. \$90-\$150



TURTLE LAKE 54889 MAP:B4



Canyon Road Inn, LLC

575 West Town Line Road
888-251-5542
info@canyonroadinn.com
canyonroadinn.com

Quiet comfort. Lakeside decks and patios.



King beds, dbl whirlpools, fireplaces, private baths and robes. Hiking trails, gazebo, complimentary watercraft, casino, parks, museums nearby. One hour to Twin Cities. 6 rms. \$100-\$150



TWO RIVERS 54241 MAP:I6



Red Forest B&B

1421 25th Street
888-250-2272
info@redforestbb.com
redforestbb.com

"Experience the charm, feel the difference." Sparkling stained glass, heirloom antiques, and gracious



hospitality await you. Cool lake breezes, sugar sand beaches, all in a quaint little fishing port. 4 rms. \$110-\$120

HOW TO B&B

Where to find where to stay? With maps, amenity searches, specials & packages, it's: yestobliss.com



VIROQUA 54665 MAP:D7



Pietsch Tree Farm B&B

S 3818 Cty Rd S
866-743-8724
innkeeper@peachtreefarm.com
peachtreefarm.com

A Norwegian settler's home circa 1850, on 105 peaceful acres. Sleeps eight. Equipped kitchen. Grill on deck. Private bath and entrance. One mile from Avalanche and world-class fly fishing.

1 rm. \$90-\$125



WATERFORD 53185 MAP:H8



River View Inn

202 West Racine Street
888-534-8439
info@bartoncollins.com
riverviewinnwaterford.com

This circa 1900 Victorian style home is filled with charm and warmth. Antique furnishings throughout. Enjoy being

pampered, because you are special. You deserve the extra attention.
2 rms. \$69-\$79



WATERTOWN 53094 MAP:G8



Jesse Stone House B&B

300 S. Washington St.
920-262-1918
info@jessestonehouse.com
jessestonehouse.com

Step back in time to enjoy our Victorian-era bed and breakfast. Relax amid antiques while enjoying the amenities of today. Located halfway between Madison and Milwaukee in a historic area. 2 rms. \$99



MANAWA 54949 MAP:G5



Ferg Haus Inn of Ferg's Bavarian Village

N8599 Ferg Road
920-596-2946
fergbvil@wolffnet.net
http://fergsbavarianvillage.com

Willkommen to our fairytale village. Featherbeds, acres of lawn and gardens, island gazebo, chapel, gasthaus, and European giftshop await you. Oktoberfest, August 9, 2008, here in the village. 4 rms. \$80-\$90



Lindsay House B&B

539 Depot Street
920-596-3643
lhousebb@wolffnet.net
lindsayhouse.com

Charming, Victorian-era inn with a breath of fresh air. Enjoy all Central Wisconsin has to offer at Lindsay House Bed & Breakfast – the undiscovered jewel of Waupaca County. 4 rms. \$80-\$90



WAUPACA 54981 MAP:G6



Apple Tree Lane B&B

E3192 Apple Tree Lane
877-277-5316
thielkerri@aol.com
appletreelanebb.com

1880 Victorian farmhouse on seven park-like acres along 400 ft of the Crystal River. Luxurious amenities, gourmet breakfasts and impeccable service await you. Comfortably elegant inn. 5 rms. \$90-\$175



Cleghorn B&B

E1268 Cleghorn Road
800-870-0737
info@cleghornbnb.com
cleghornbnb.com

Warm, friendly, informal country home on wooded lot adjacent to Waupaca's beautiful Chain O'Lakes. Comfortable décor.



Relax & enjoy delicious breakfasts in a peaceful, rural setting. 3 rms. \$89-\$130



Crystal River Inn

E1369 Rural Road
800-236-5789
715-258-5333
crystalriverinn@charterinternet.com
crystalriver-inn.com

1853 farmstead on Crystal River, historic village of Rural, country charm. Cabins for families. Full breakfast with Southern touch; wildlife/bird habitat; new labyrinth; bicycle friendly. 9 rms. \$68-\$200



WAUPACA Continued **MAP:G6**



Green Fountain Inn

604 South Main Street
800-603-4600
greenfountaininn@yahoo.com
greenfountaininn.com

Located on Waupaca's historic Main Street. Inn's intimate café serves gourmet lunches Monday-Friday. Perfect for small weddings, receptions, showers, business meetings. **4 rms. \$67.50-\$85**



WEYAUWEGA 54983 MAP:G7



Willow Pond Bed, Breakfast & Events

E5490 North Shore Road
920-867-2493
wyngaard@centurytel.net
willowpondevents.com

Located halfway between Appleton and Stevens Point, snuggled amidst the willow trees, is a masterpiece of nature awaiting your visit. Large farmhouse built in 1901, decorated with antiques. **5 rms. \$75-\$95**



WAUSAU 54403 MAP:F5



Stewart Inn

521 Grant Street
715-849-5858



innkeeper@stewartinn.com stewartinn.com

Upscale lodging in a National Register Arts & Crafts mansion. Opulent, 2nd floor guest rooms, three with fireplaces. Ensuite baths with steam showers, evening wine and cheese, gourmet breakfast. Stroll historic downtown Wausau for fine dining, shopping, Grand Theater, WI River trail. Minutes to downhill skiing at Granite Peak. Cross country ski, canoe, kayak. **5 rms. \$110-\$215**

WAUWATOSA 53226 MAP:H8



WEST BEND 53090 MAP:H7



Isadora's B&B

724 Beech Street
262-306-8468
dziebarth2000@yahoo.com
isadorasbedandbreakfast.com

This elegant, Victorian home has four beautiful guestrooms, each with private bathroom and TV/DVD. Central air and free wireless internet. We serve a full gourmet breakfast and dessert nightly. **4 rms. \$79-\$119**



WESTBY 54667 MAP:D7



Westby House Victorian Inn

200 West State Street
608-634-4112
info@westbyhouse.com
westbyhouse.com

This La Crosse area B&B, boasting Victorian architecture, is spacious and invitingly decorated. Perfect getaway location. Close to State bike trails, hiking, canoeing and Amish. **9 rms. \$75-\$185**



WESTFIELD 53964 MAP:F6



Martha's Ethnic B&B

259 E. 2nd Street
608-296-3361
marthasethnicbandb@yahoo.com
yestobliss.com

Best bed & breakfast value. Gourmet breakfast choices. Wake-up coffee and fresh-baked old world kolaches or kuchen; afternoon wine and cheese, or tea and sweet breads. **3 rms. \$60-\$85**



WHITE LAKE 54491 MAP:G4



WHITEWATER 53190 MAP:G8



Hamilton House B&B

328 West Main Street
262-473-1900
kathie@bandbhamiltonhouse.com
bandbhamiltonhouse.com

1861 Second Empire home. Walk to shops, restaurants and parks. Sun-filled parlors. Refreshments. Hiking, biking, kayaking,



hang gliding, theater. "Old world Wisconsin." Kettle Moraine. UW-WW.
8 rms. \$90-\$175



Victoria On Main B&B

622 West Main Street (Cty Hwy 12)
262-473-8400
viconmain@sbcglobal.net
yestobliss.com

1895 Queen Anne Victorian home in a National Historic District. It features beautiful wood and crisp, cotton linens in environmentally friendly surroundings. Biking, hiking, theater, and "old world Wisconsin."



3 rms. \$62-\$95

WINCHESTER 54557 MAP:E2



Harris Lake B&B

6182 East Harris Lake Road
877-886-0891
harrislakebb@centurytel.net
harrislakebb.com

Escape your world and enter ours. Rustic décor meets exceptionally comfortable lodging. Experience nature year-round



with outdoor excursions, or absorb the majestic view from the loft library.

4 rms. \$100-\$125

WISCONSIN DELLS 53965 MAP:F7



Bowman's Oak Hill B&B

4169 Hwy 13
888-253-5631
bowmansoakhillbb@aol.com
bowmansoakhill
bedandbreakfast.com



New in '07, the cottage brings another romantic room to enjoy at this secluded B&B. Located one mile from the center of the Dells, on eight park-like acres. Enjoy the deck, wildlife and stars.

4 rms. \$85-\$175



Whispering Waters B&B

E11344 Pocahantas Circle
608-253-8388
info@dellswbb.com
dellswbb.com

Nestled in the tranquil, dense woods above an 80 ft. sandstone cliff overlooking the Wisconsin River. Enjoy breathtaking



views, a private courtyard, beach, cozy campfires and fireplaces.
3 rms. \$120-\$210



White Rose Inns

910 River Road
800-482-4724
info@thewhiterose.com
thewhiterose.com

Winner of Inn Traveler magazine's Best Holiday Getaway Award! Three historic houses, one block from downtown



attractions. Beautiful river views, gardens, massages, murder mysteries, weddings. 21 rms. \$80-\$225

HOW TO B&B

Alphabetic list of B&Bs on pages 66-67

GET GOING GREENER

The strength of Wisconsin's tourism industry is largely dependent on our wealth of natural resources - the state's lakes, rivers, forests and wildlife. Accordingly, Wisconsin is committed to preserving this pristine natural product.

Travel Green Wisconsin is a Wisconsin Department of Tourism initiative that encourages tourism operators to reduce their environmental impact by utilizing smart, eco-friendly business practices. Businesses displaying the Travel Green certificate demonstrate their commitment to a sustainable Wisconsin tourism industry.



Travel **WISCONSIN**.com

800.432.8747

HOW TO B&B

There is a Google map for each B&B at: www.yestobliss.com



COLORFUL DINING



GREEN ACCOMMODATIONS



Travel **WISCONSIN**.com

800 432 8747

TURTLE LAKE TURTLE LAKE

Find yourself in the middle of it all..

ATTRACTIONS / POINTS OF INTEREST —

- Cattail Trail—ATV, snowmobile/multi-use, 13 mi of trail from Amery to Almena through TL
- Snowmobile Trail—runs north to Spooner
- Biking Trails & Scenic Drives
- Koppes Pottery
- Echo Hills Golf Course
- Gizmo Golf
- St. Croix Casino
- Spare Time Bowling Bar & Grill
- Gift & Antique Shops
- Lake Country Dairy
- Bella Currella Cheese & Deli
- Pipe Dream Center
- Rustic Road 67—also known as the Canyon Road
- Village Park, Railway Park, Westside Park
- Skinaway Lake Recreational Park
- Joel Marsh Wildlife Area
- Loon Lake Wildlife Area
- Rice Beds Creek Wildlife Area
- Downtown Business District



Tourist Information



Contact Us for More Information
We Look Forward to Your Visit!

(800) 811-0338

www.turtlelakewi.com

Hudson • The Spirit of the St. Croix



Knocke's Chocolates
715.381.9866

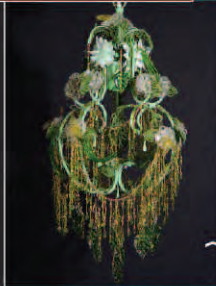
The Futon and Home Shoppe
715.381.5640



Winzer Stube
715.381.5092



Afton* Hudson Cruise Lines
651.436.8883



CocoBello
715.381.3433

Vine Street Florist
715.386.5953



The Nova
715.386.5333



Dilly-Dally in the Alley
715.381.8424

Idaho Chucks
715.381.0099



Elan
715.381.8424



Abigail Page Antique Mall
715.381.1505



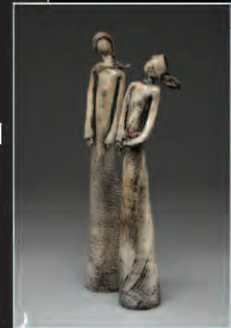
Grapevine Interiors
715.381.2870



Et Cetera
715.381.3434



Moppets on Main
715.386.0878



SEASONS on St. Croix
715.381.2906



For shopping, dining & lodging information please contact Hudson Area Chamber of Commerce & Tourism Bureau 1(800) 657.6775 or visit our website at www.hudsonwi.org



Need to escape to the outdoors or retreat to the indoors? Relax and rejuvenate in the Stevens Point/Plover Area. Located in the middle of Wisconsin, you don't have to drive hours and hours to start your next vacation.

Let us plan your next getaway!

800-236-4636

www.stevenspointarea.com



The Red Mill SUPPER CLUB

*Come feel at home...
Nestled in the scenic Northwoods.*

**Steaks ♦ Seafood ♦ Cocktails
Friday Fish Fry ♦ Family Freindly**

1222 Hwy. 10 West
Stevens Point, WI 54481
(2 miles west of Stevens Point on Hwy. 10)

theredmill.net

715-341-7714

Hours: Open nightly at 5pm ♦ Friday at 4pm ♦ Closed Sun

T.W. MARTIN'S PUB
111 COOPER STREET
DOWNTOWN WAUPACA
(ON THE RIVER BEHIND
NORTH MAIN STREET).



ENJOY THE COMFORT OF
OUR AUTHENTIC IRISH
PUB & RESTAURANT
NON-SMOKING INDOORS
715.942.0499

"Cead Mile Failte"

"100,000 Welcomes"

11 Specialty Tap Beers, Ales, Micro-brews, Cider, great Wine list.



Smoke-Free Dining. Specialty Sandwiches, 1/3 lb. Burgers, Garden Fresh Salads & Vegetables, Irish Fare includes our Delicious Guinness Beef Stew. Homemade Soups, Steak & Fish Dinners, more.

Mon.-Sat. @ 4:00 p.m. Info / Directions 715.942.0499 • www.twmartins.com

*Light lunch at the Sunrise Cafe,
Leisurely dinner at the Steak House ...*

BOTH IN MANAWA, WISCONSIN

SUNRISE CAFE

Smith's Manawa Steak House
960 Depot St. - 920-596-2811

Sunrise Cafe
310 Bridge St. - 920-596-2615
John and Robyne, owners



VISIT

Green Lake

WI.

REDISCOVER

SIMPLE PLEASURES

www.visitgreenlake.com

1-800-253-7354



Visit the beautiful Kickapoo River Valley
Where an ancient river meanders through cliffs and farms
Where every road is a scenic road
Where silent sports abound
Where unique B&Bs welcome your arrival



www.KickapooValley.org



Mineral Point

Experience what others
 have discovered...

One of America's Dozen Distinctive Destinations.
 March 2007 • *National Trust for Historic Preservation*

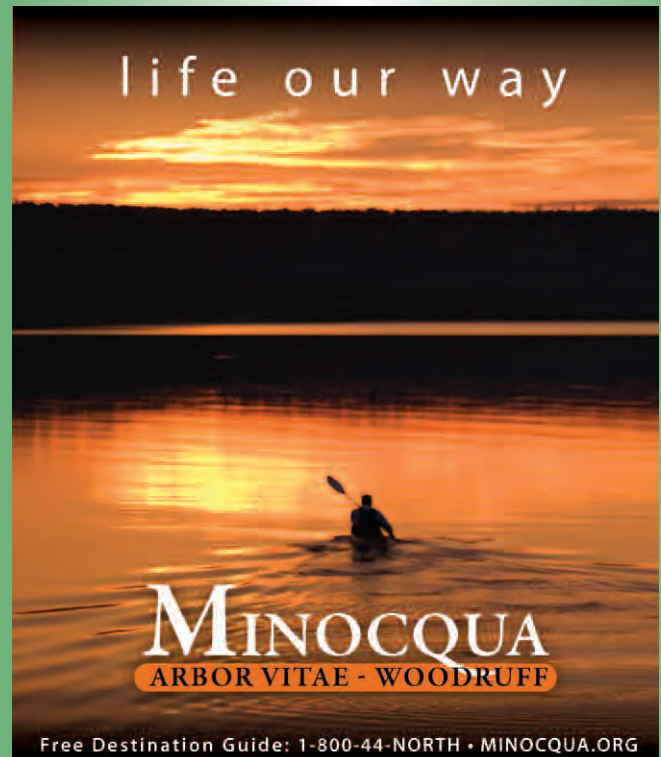
One of The Next Big Things.
 March/April 2007 • *Midwest Living Magazine*

One of 100 Best Small Town Getaways.
 June 2007 • *Midwest Living Magazine*

1.888.POINT WI or 608.987.3201
www.mineralpoint.com

NORTHWOODS

life our way



MINOCQUA
 ARBOR VITAE - WOODRUFF

Free Destination Guide: 1-800-44-NORTH • MINOCQUA.ORG

Columbus Antique Mall and Museum



Wisconsin's
Largest
Antique Mall

Where dealers shop
for their merchandise –
Over 82,000 square feet
of antiques (444 booths in
18 rooms) sold by 222
of Wisconsin's finest dealers!

- Christopher Columbus Museum
- Columbian Exposition
- Columbian Publishers

NEW! Enjoy snacks
and beverages in our
World's Fair Lounge

Open 8:15 a.m. - 4 p.m. Dark: Easter - Thanksgiving - Christmas
239 Whitney Street, Columbus, WI 53925-0151
Phone or Fax: 920-623-1992

Horicon Marsh Boat Tours



- May-October: Sightseeing Boat Tour
- May-September: Birding Adventure
- July-August: Sunset Cruise
- April-September: Canoe/Kayak Rentals

800-814-4474 www.horiconmarsh.com
Highway 33 by the bridge in Horicon

Fort Atkinson W I S C O N S I N

Where Historic Sites
Meet Broadway Lights



Historic Sites
Professional Theatre
Relaxing Recreation
Picturesque Riverwalk
Eclectic Shopping
Unique Dining

For Free Fort Atkinson visitor information, visit
www.fortchamber.com or call 1-888-SEE-FORT

Visit picturesque Port Washington

New England CHARM in a lakeside village...



Port Washington – nestled on the shores of Lake Michigan just north of Milwaukee – offers historic walking tours past lighthouses, exhibits & memorials. ✦ Enjoy festivals which celebrate the maritime heritage. ✦ Memorable dining ✦ Outdoor concerts ✦ Lakeside golfing ✦ Paved trails & bike rentals ✦ Charter fishing ✦ Lakeview lodging ✦ Friendly!

FREE Visitors GUIDE 800-719-4881
portwashingtontourism.com

Port Washington Tourism Council, Box 153, Port Washington, WI 53704

On beautiful Lake Michigan

CAPTAIN'S WALK WINERY

Downtown Green Bay

345 South Adams Street

Cabernet Sauvignon • Merlot • Sangiovese
Captain's Red • Chardonnay • Riesling • Sauvignon
Blanc • Gewurztraminer • Disappearing Treasure



A venue for vinifera, the Captain's Walk Winery offers premium grape wine tasting in a light-hearted manner. Partake in a laid back experience that usurps the snobbery out of wine while enjoying an unique tasting education.

920.431.WALK • 888.431.WALK
www.captainswalkwinery.com

Aging Gracefully for over 40 Years.



Double Gold Medal Winning Grape and Fruit Wines!
800.955.5208 • www.vonstiehl.com

Visit today! Three blocks east of
HWY 42 on Navarino Street (on the river).
Open 7 days a week • 115 Navarino Street • Algoma, WI

Door County

Escape. Relax. Enjoy.

Eat well.

Taste wine.

Gallery hop and retail shop.

Bay side.

Quiet side.

Your romantic side.



DOOR COUNTY

SEASON TO SEASON • SHORE TO SHORE

1-800-52-RELAX

www.DoorCounty.com



...Visit our Lighthouses, Fish our Lakes,
Bike our Trails and Explore the Forests.

Discover Maritime Treasures and Adventures
in the Port Cities of Manitowoc-Two Rivers
Wisconsin's Maritime Capitol™

800-627-4896
www.manitowoc.info

Manitowoc Area Visitor & Convention Bureau

Check out a B&B before you Check in!
Visit us anytime: www.yestobliss.com



200 Wisconsin B&B Inns
at your fingertips!

Peer into bedrooms designed
to pamper and relax...

Feast your eyes on crepes,
fruits, steaming coffee on
the dining table...

Picture yourself warmed
by a glowing fireplace
at the foot of your bed...

The right place to find the right place:
www.yestobliss.com

Use *Find a B&B* to search your destination by region,
city or inn name. Use the *Google Map* shown with each
B&B, plus a helpful "cities nearby" list. *Amenity
Searches* can customize the details of your special
getaway or efficient business trip:

- Pet friendly ■ In the city ■ Evening dessert
- Hiking trail nearby ■ Special diets ■ Whirlpool
- 2 beds in a room ■ Travel Green Certified ■ Internet

The *Specials list* updates ever-changing packages and
promotions available. This is the page to visit regularly!

The right place to make a reservation:
www.yestobliss.com:

Check availability or reserve online, at your
convenience, anytime night or day.

And we'll come to you

Each month, we send a brief and newsy ezine. Trends,
tips, insider recipes, and innkeeper recommendations
are sure to have you packing your
suitcase! It's easy to subscribe.

Sign up during your next visit to
www.yestobliss.com. (We promise not
to share or sell your email – ever.)



A	
A Victorian Swan On Water	44
Acanthus Inn B&B	33
Albany House	3
Altemus Corners B&B	45
American Country Farm B&B	32
Angel Inn	21
Annie's Garden	29
Apple Grove Inn	5
Apple Tree Lane B&B	47
Arbor House, An Environmental Inn	29
Arbor Inn	40
Arbor On Vita	5
Arbor Rose B&B	36
Artesian House	5
Astor House	21
Atrium B&B	19
B	
Bay Point Inn	13
Bedell Hill	31
Black Walnut Guest House	15
Blacksmith Inn On the Shore	12
Bowman's Oak Hill B&B	50
Brambleberry B&B	25
Brayton B&B	38
Brewery Creek	33
Britannia B&B	3
Brumder Mansion B&B	33
C	
Cable Nature Lodge	7
Cambridge House B&B	7
Cameo Rose Victorian Country Inn	6
Canyon Road Inn, LLC	45
Cedar Ridge B&B	39
Church Hill Inn	15
Cleghorn B&B	47
Coach House	20
Cobblestone B&B	6
Cold Spring Inn	24
Coloma Hotel	10
Colonial Gardens B&B	16
Columbus Carriage House B&B	10
Country Comfort	32
Country Pleasures B&B	9
Courthouse Square B&B	11
Covington Manor B&B	8
Cream Pitcher, The	6
Crystal River Inn	47
D	
Door County Lighthouse Inn	13
Dreams of Yesteryear	44
Duvall House	25
E	
Eagle Centre House B&B	18
Eagle Harbor Inn	14
Earth Rider Hotel	7
East View B&B	19
Ellison's Gray Lion Inn	40
Enchanted Valley B&B	11
English Manor B&B	42
Escape by the Lake	24
F	
Fargo Mansion Inn	28
Feathered Star B&B	13
Ferg Haus Inn	
of Ferg's Bavarian Village	47
Fo'c'sle Inn	11
Fountain Prairie Inn & Farms	20
Four Gables B&B	26
Franklin Street Inn LLC	3
French Country Inn of Ephraim	14
G	
Garden Gate B&B	16
Gilbert Huson House	38
Grandview B&B	12
Grapevine Log Cabins B&B	43
Green Fountain Inn	48
Gresley House B&B	33
H	
Hamilton House B&B	50
Happy Horse B&B	23
Harbor House Inn	13
Harris Lake B&B	50
Harrisburg Inn B&B	30
Havenly Inn, LLC	3
Hazelhurst Inn B&B	23
Heiwausou B&B	27
Hill Street B&B	44
Hillcrest Inn & Carriage House	7
Hillwind Farm B&B Inn	38
Honeybee Inn B&B	24
Hotel Disgarden B&B	13
Hotel Ruby Marie	29
Hughes House B&B	40
I	
Inn at Cedar Crossing	16
Inn at Lonesome Hollow	43
Inn at Pine Terrace	37
Inn at Pinewood, Inc.	18
Inn at Wawanissee Point	4
Inn at Windmill Farm	12
Inn on Main Street LLC	44
Inn On Maple	15
Inn The Pines B&B	16
Isadora's B&B	49
J	
Jamieson House	39
Jesse Stone House B&B	46
Jesse's Historic Wolf River Lodge	49
Juniper Inn	14
Justin Trails B&B Resort	43

K	
Kinni Creek Lodge & Outfitters	41
L	
Lake Ripley Lodge B&B	8
Lakeside B&B	20
Lamp Post Inn, The	21
Lauerman House Inn	31
Lazy Cloud Lodge	28
Lighthaus Inn B&B	43
Lilac Village B&B	42
Lindsay House B&B	47
Little Harbor Inn	16
Little Red House B&B	48
Lumber Baron Inn	26
M	
M & M Victorian Inn	31
Mansion Hill Inn	30
Martha's Ethnic B&B	49
McConnell Inn	22
McCormick House	23
McGilvray's Victorian B&B	10
Mill House Inn	41
Mill House on Main	27
Miller's Daughter B&B	22
N	
Naeset-Roe Inn	45
Neumann House B&B	40
New Yardley Inn	12
O	
O'Bryon's Village Inn	11
Old Coach Inn B&B	6
Old Rittenhouse Inn	5
Oscar H. Hanson House B&B	8
Otter Creek Inn	19
P	
Parkview B&B	41
Parsonage B&B	30
Phipps Inn	24
Pickwick Inn	18
Pietsch Tree Farm B&B	46
Pine Grove Park B&B	41
Pinehaven B&B	4
Pinehurst Inn at Pike's Creek	5
Pleasant View B&B	10
Port Hotel Restaurant & Inn	39
Port Washington Inn	39
Prairie Splendor Farm B&B	4
Q	
Quiet Cottage B&B on the Lake	17
R	
Rainbow Ridge Farms B&B	26
Red Brick Inn	20
Red Forest B&B	45
Residenz B&B, The	4
Reynolds House B&B	17
Richmond's Guest Lodge	46
River House	10
River View Inn	46
River's Bend Inn	32
Riverview B&B	37
Rochester Inn	42
Rose of Sharon B&B	37
Roses B&B	28
S	
Sawyer House B&B	17
Scarlett House	25
Scotfield House	17
September Farms B&B	27
Sill's Lakeshore B&B Resort	33
Smoland Prairie Homestead Inn	21
Speckled Hen Inn	30
St. Croix River Inn	37
Stagecoach Inn B&B	9
Stewart Inn	48
Strawberry Lace Inn	43
Sunnyfield Farm B&B	8
Sweet Autumn Inn	28
Sweet Dreams B&B	9
T	
Tauschek's B&B Log Home	38
The Fringe, A Country Inn	42
The Lawson House B&B	22
The Roost B&B	3
Thorp House Inn & Cottages	14
Trillium	27
Trollhaugen Lodge	14
Tufts' Mansion	36
V	
Victoria On Main B&B	50
Victorian Garden B&B	36
Victorian Rose B&B	36
W	
Walking Iron B&B	32
Washington House Inn	9
Westby House Victorian Inn	49
Westphal Mansion Inn B&B	22
Westport B&B	31
Whispering Pines B&B	28
Whispering Waters B&B	51
White Gull Inn	15
White Lace Inn	18
White Rose Inns	51
White Shutters	29
Willow Pond Bed, Breakfast & Events	48
Wilson Schoolhouse Inn	26
Wisconsin House Stage Coach Inn	23
Woodenheart Inn	15
Y	
Ye Olde Manor House	19

Have you been thinking...

“I’d like to be an innkeeper?”

Aspiring Innkeeper Seminars – Spring & Fall

WBBA can help you sort the FACTS

from FALLACIES and FANTASIES

You’ll learn from experienced innkeepers and industry professionals:

- Start-up essentials: licensing, zoning, insurance, resources
- Inn management – manual and electronic innkeeping
- Marketing: where and how to maximize your ROI
- Generating income – beyond heads on beds
- Buying an inn: financing, inn value, types of ownership

Round table sessions explore additional topics.

The full day (9 a.m.-5 p.m.) seminar includes the sessions above, innkeeping resource materials, trade publications, product samples, lunch, refreshment breaks, and a B&B tour.

Advance registration recommended. For dates: visit

www.yestobliss.com or call WBBA 715-539-9222

Aspiring Innkeeper Binder & Books Package

WBBA’s hefty six-pound *Aspiring Innkeeper*

Binder & Books Package answers your questions:

- Where and how do I begin?
- What are the B&B licensing and zoning requirements?
- Does the ADA (Americans with Disabilities Act) apply to B&Bs?
- How do I develop a business plan?
- What types of financing and ownership are available?
- Are there benefits to purchasing an operating inn?
- ...and many more!

These books are included:

So, You Want to be an Innkeeper

Developing a B&B Business Plan

Innkeeping Unlimited

To purchase the Binder & Books Package call WBBA 715-539-9222.

“Cooking Inn Style” recipe book

For the growing band of culinary travelers, we offer “insider” recipes from WBBA B&B chefs.

For many, the best part of a B&B stay is breakfast!

“Made-from-scratch” egg strata, soul-warming coffee cake, or a decadent chocolate treat, all go a long way in defining the B&B experience.

We asked WBBA innkeepers – wonderful home chefs in their own right – to share favorite recipes and they happily obliged. The result, **Bon Appetit, Cooking Inn Style**, offers more than 60 recipes to create for your own family and guests.

\$15.95 + shipping

Available at many member inns

Order online at yestobliss.com, or

call *The Guest Cottage* at 800-333-8122



Frequent Sleeper Passport

Stay 10 nights at any participating B&Bs, and the 11th night is our treat to you!

A **Frequent Sleeper Passport** is inside the WBBA CD, *On a Blissful Note*, a compilation of mood-setting piano music composed by Midwest artist Neal A. Topliff.



How the program works

Purchase “*On a Blissful Note*” CD (\$15.95 + \$3 shipping) by calling 715-539-WBBA (9222) or purchase it at many WBBA B&Bs. Tucked

inside, you’ll find a **Frequent Sleeper Passport**. Your Passport will be validated by the participating inns, with one regular rate night entry per line.

When completed, mail the Passport to:

WBBA

108 South Cleveland Street, Merrill WI 54452

and you will receive a FREE NIGHT certificate in the mail, redeemable at any of the inns you visited as listed on your **Frequent Sleeper Passport**.



B&B...short for Blissful & Beckoning

Has this directory whetted your appetite for blissful B&B getaways of your own? Our web site, www.yestobliss.com is loaded with enticing details. Customize your getaway or make business travel a pleasure with searches by region, city, special packages, availability, even amenities.

The Wisconsin Department of Tourism is a terrific source of information on events and activities to enjoy during your B&B stay. Call 800-432-TRIP or visit them at travelwisconsin.com.

We are looking forward to welcoming YOU to our B&Bs.



108 South Cleveland St.
Merrill, WI 54452-2435
715-539-9222
info@yestobliss.com

PHOTO CREDITS – Cover and inside front cover: Hughes House, Racine. Back cover: White Lace Inn, Sturgeon Bay. ©2008. All rights reserved including right of reproduction in entirety or in part, in any form. The Wisconsin Bed & Breakfast Directory is published by the Wisconsin Bed & Breakfast Association. WBBA makes no representation that information herein is free from error or unchanged since going to press and assumes no responsibility for accuracy of information provided by innkeepers in the compilation of the Directory.